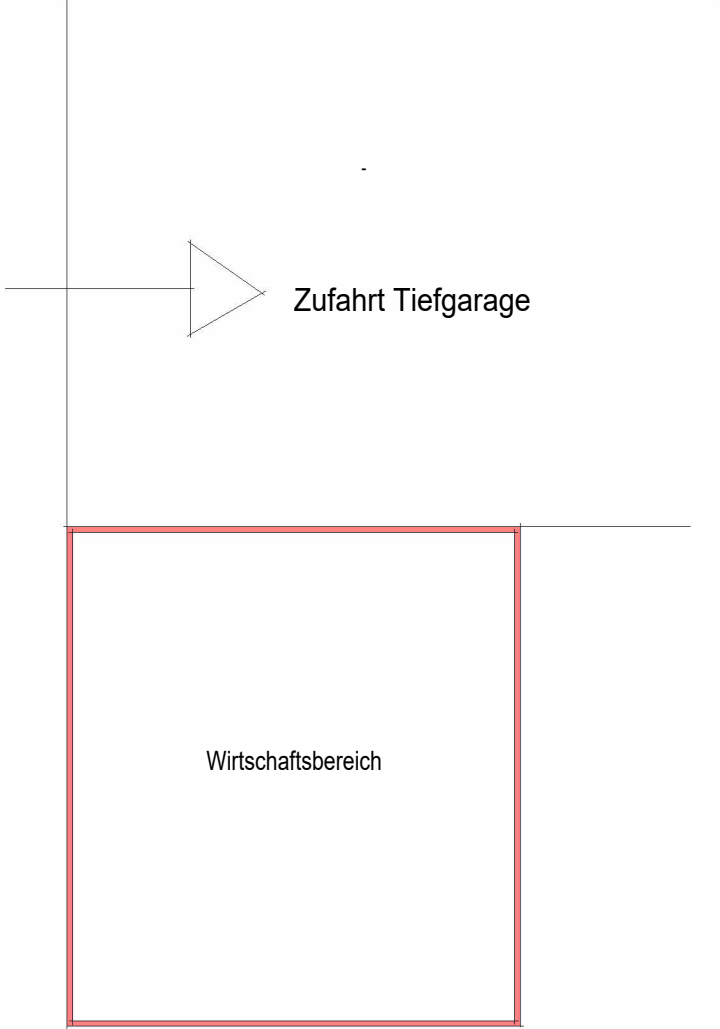
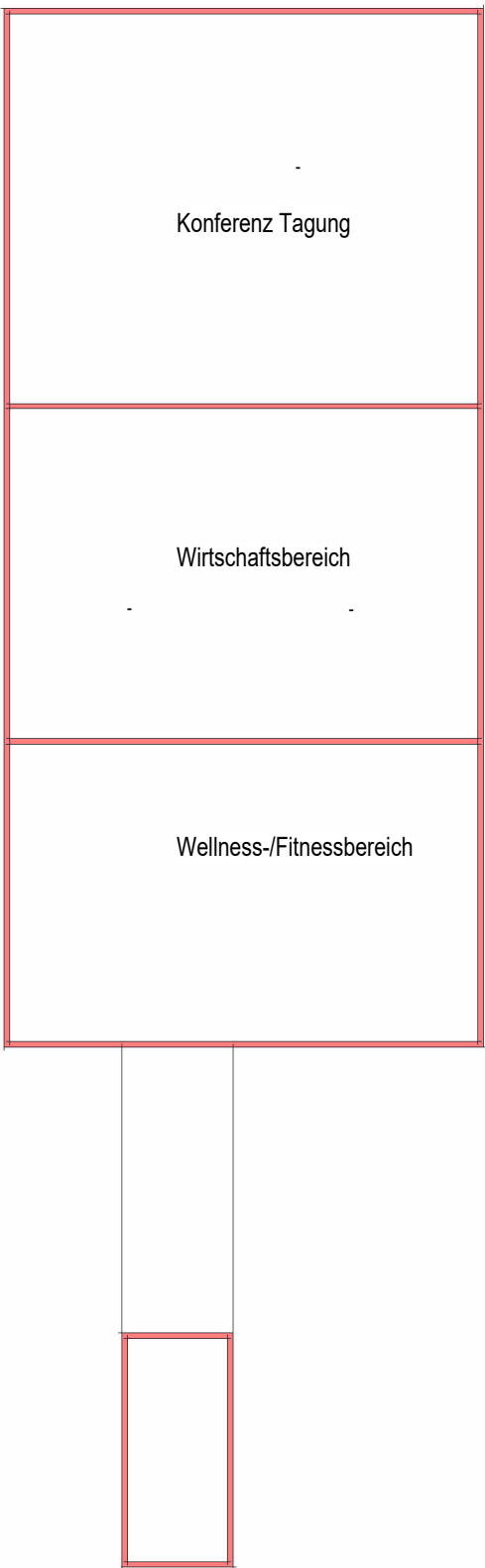


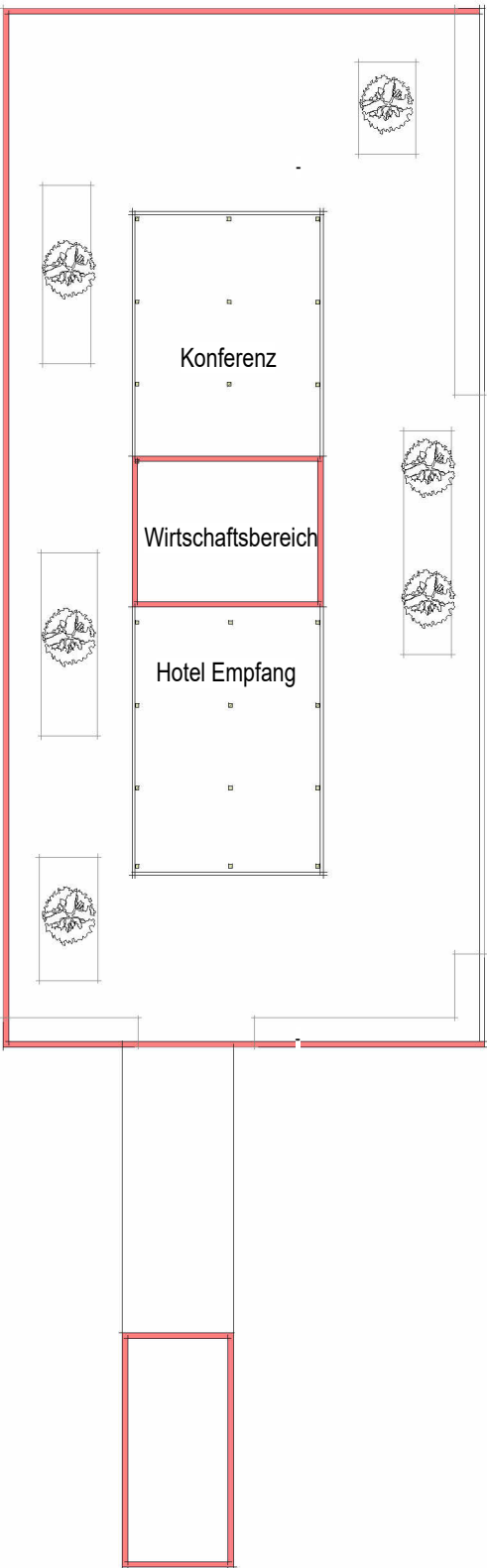
2. Untergeschoss



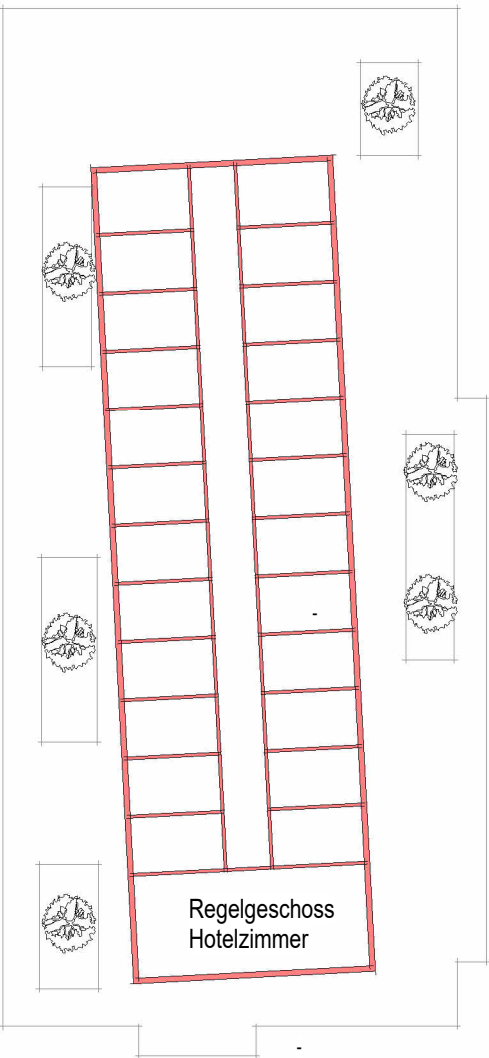
1. Untergeschoss



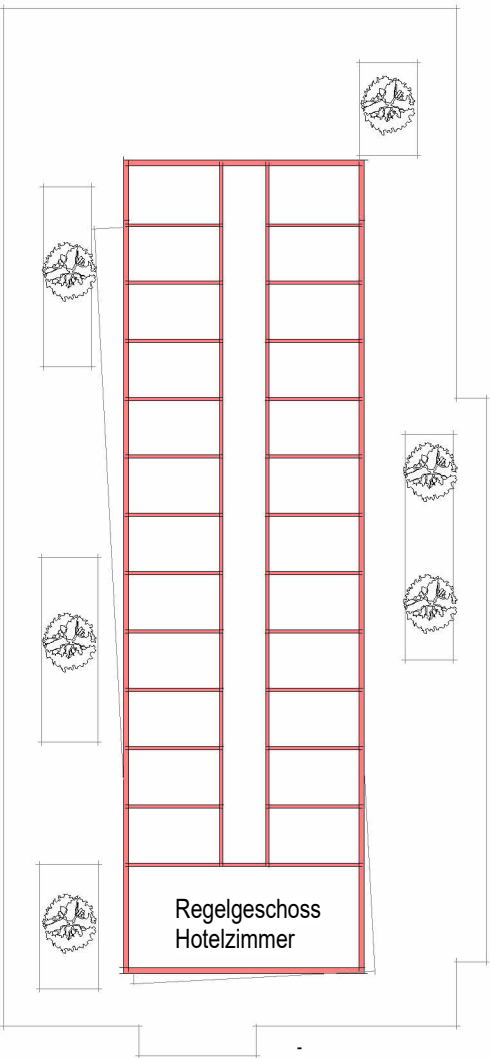
Erdgeschoss



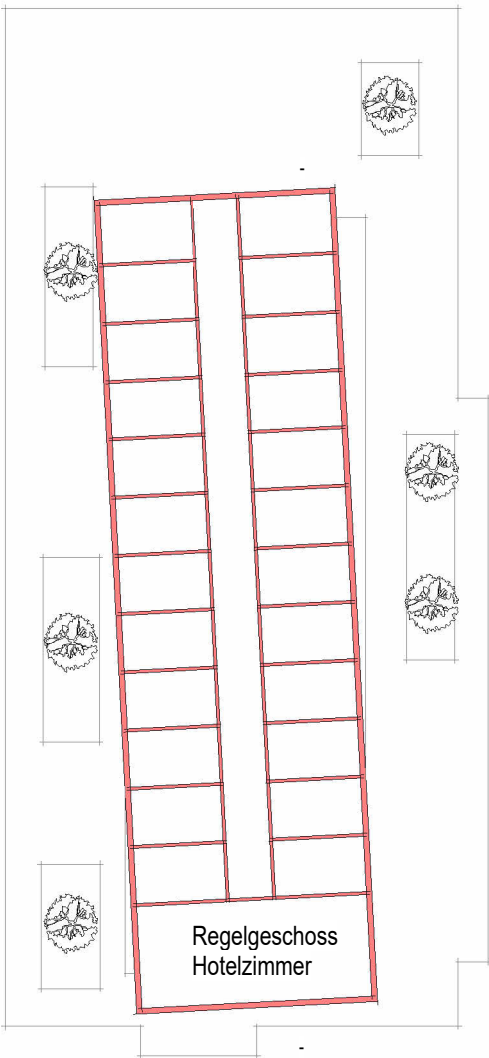
1. Obergeschoss



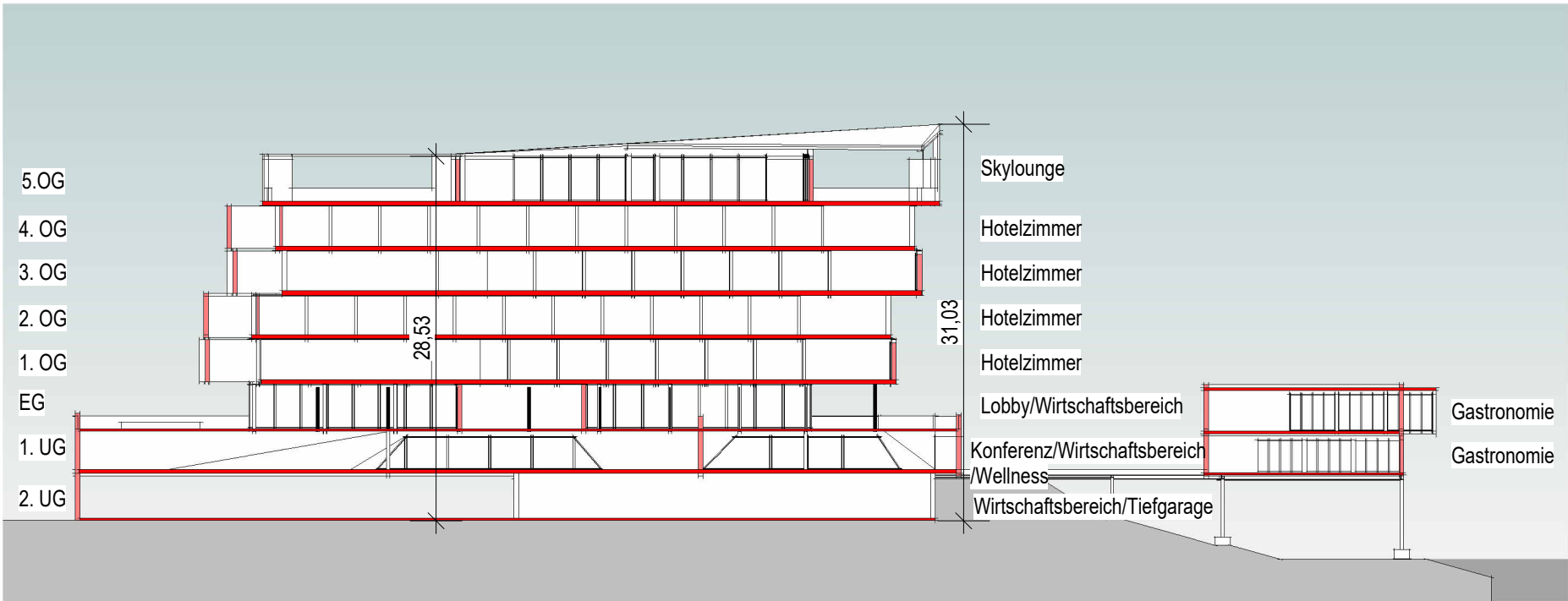
2. Obergeschoss



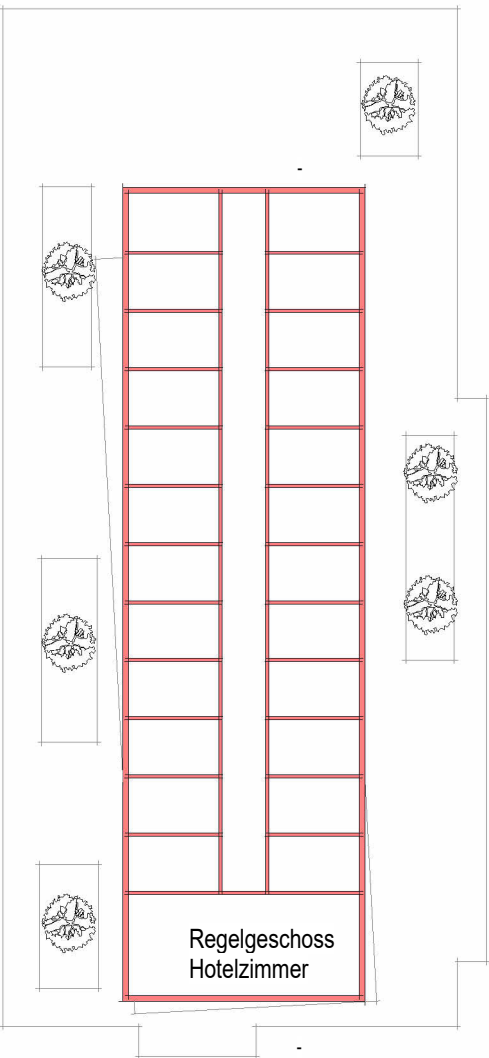
3. Obergeschoss



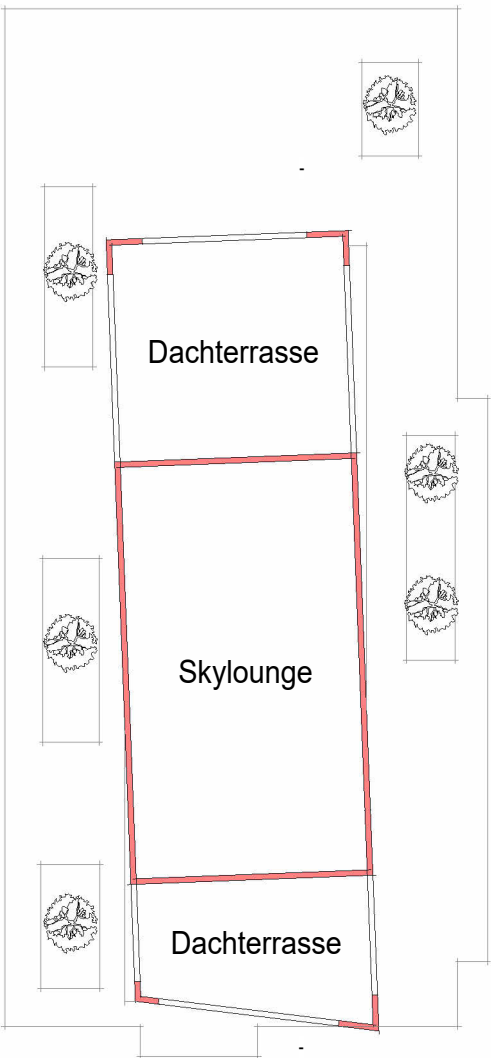
Schnitt



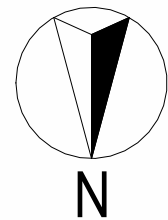
4. Obergeschoss



5. Obergeschoss



- BESTAND
- NEUBAU
- ABBRUCH
- GRUNDSTÜCKSGRENZE
- BAUGRENZE



VORABZUG GRUNDLAGEN

BA
BUNGARTEN ARCHITEKTEN

Max-Planck-Straße 1
53501 Grafschaft-Gelsdorf
Tel. 0 22 25 - 709 73 11
Fax: 0 22 25 - 709 73 20
kontakt@bungartenarchitekten.de
www.bungartenarchitekten.de

BAUHERR:	MASSTAB: 1:500	GEPRÜFT: GB
OBJEKT: Remagen Brücke	GEZEICHNET: JB	PROJEKT-NR: 202X-XX
BAUTEIL: Grundlagenermittlung	DATUM: 10.06.2025	PLAN-NR: GE-01